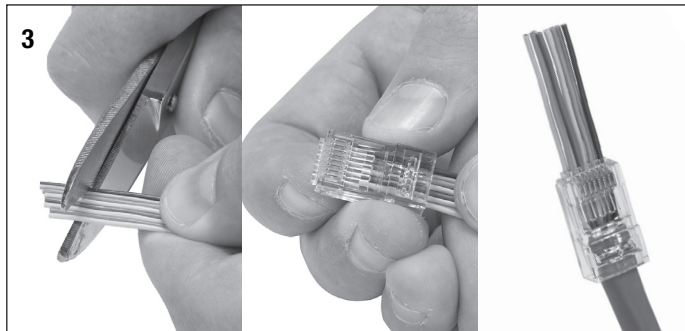
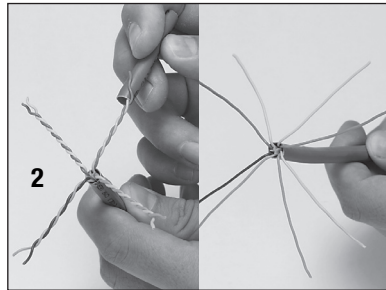


ezEX-RJ45[®] Termination Kit



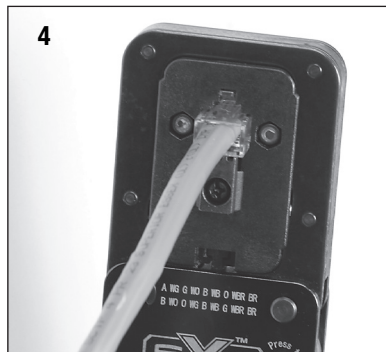
Prep and Crimping ezEX-RJ45[®] Connectors

1. Remove cable jacket leaving 1" to 1 1/2" of conductors. If there is a pair separator, remove it by cutting flush at the end of the cable.
2. Untwist all 4 pairs and comb out all twists so conductors can lay side by side with no gaps. Configure your pairing to the T568 A or B. See chart below.
3. Cut all 8 ends even, insert into rear of connector, and push through and out the front end.
4. Insert prepped connector into the EXO-EX Die and

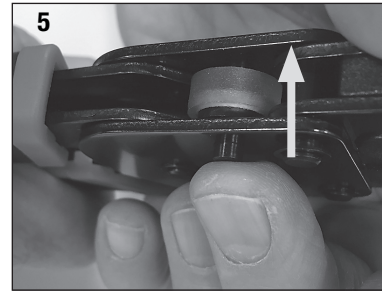


listen for the 'click'. It is now 'locked' in and ready to be crimped. Squeeze handles together slowly until they come to a stop. Release, unlock the connector and remove from the EXO-EX Die.

Ready to use



5. To Unlock squeeze handles together and hold, pushing the lock button on the back side all the way through to the front side and release the handles. The tool will now open.
6. To Lock squeeze handles together and hold, pushing the lock button on the front side all the way through to the back side and release handles. The tool is now in closed/locked position.



Open cavities for additional connectors and tools.

Model number molded into connector on contact side

Cat5e & Sm. Cat6
ezEX38 Connectors
P/N 100047C*
IDR: 0.033" - 0.038" OJD: 0.290"

Cat6 & Sm. Cat6A
ezEX44 Connectors
P/N 100028C*
IDR: 0.039" - 0.044" OJD: 0.290"

Cat6A & Lg. Cat6
ezEX48 Connectors
P/N 100029C*
IDR: 0.043" - 0.048" OJD: 0.290"

Tools:
EXO Crimp Frame
+ EXO-EX Die
P/N 100061C

Replacement Die:
EXO-EX Die for
EXO Crimp Frame
P/N 100071C

* Part Numbers are for refill packs only.

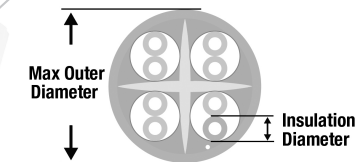
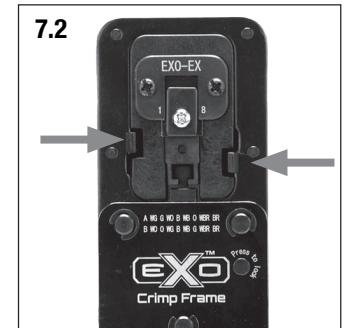
Shielded ezEX38/44/48s are available at www.platinumtools.com



T568A/T568B Wiring Chart

Wire	1	2	3	4	5	6	7	8
T568A	W/G	G	W/O	BL	W/BL	O	W/BR	BR
T568B	W/O	O	W/G	BL	W/BL	G	W/BR	BR

7. Removing EXO-EX Die Using both thumbs (see 7.1), simultaneously push in the locking tabs (see 7.2), and while holding in place, push the EXO Die toward and out the backside of the EXO Crimp Frame. Keep die set parallel to the frame to prevent jamming (see 9).
8. Replacing EXO-EX Die Same as removing the die set BUT in reverse.
9. Keep die set parallel to frame to prevent jamming for both removing or replacing.



IDR: Insulation Diameter
OJD: Outer Jacket Diameter

* Foam designed to add more tools.

We Make Connections EZ![™]

www.platinumtools.com